

# Springwell Solar Farm

ES Volume 2: Figures

Chapter 2: Location of the Proposed Development

APFP Regulation 5(2)(a)

Planning Act 2008

Infrastructure Planning  
(Applications: Prescribed Forms  
and Procedure) Regulations 2009

EN010149/APP/6.2

November 2024

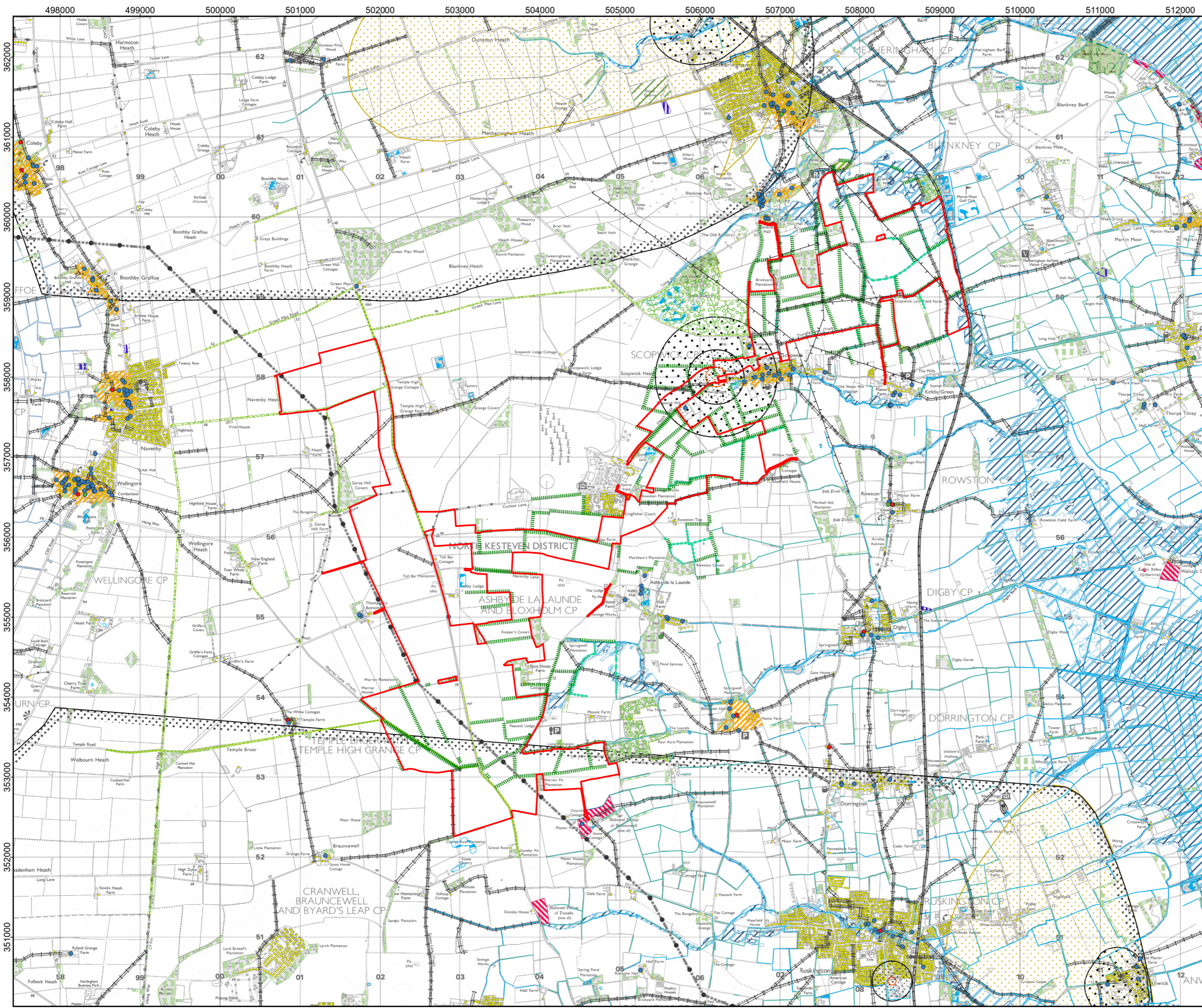
Springwell Energyfarm Ltd



# ES Volume 2: Figures

## Chapter 2: Location of the Proposed Development

Drawing number	Revision number	Drawing title	Scale
<b>Figure 2.1</b>	01	Environmental Considerations	A3
<b>Figure 2.2</b>	01	Existing Public Rights of Way	A3



- LEGEND:**
- Order Limits
  - Residential Properties
  - Listed Building Grade
    - I
    - II
    - II\*
  - National Grid Towers
  - National Grid Overhead Lines
  - Overhead Lines (132kV)
  - Public Rights of Way
  - Railway
  - Priority Hedgerow
  - Watercourses Suitable for Water Vole
  - Surface Water Line
  - Local Wildlife Sites
  - Sites of Special Scientific Interest
  - Grassland Suitable for Reptiles
  - National Forest Inventory 2021
  - Ancient & Semi-Natural Woodland
  - Ancient Replanted Woodland
  - Conservation Areas
  - Registered Parks and Gardens
  - Scheduled Monuments
  - Historic Landfill Sites
  - Surface Water Area
  - Flood Zone 2
  - Flood Zone 3
  - Source Protection Zones
    - Zone 1: (Inner Protection Zone)
    - Zone 2: (Outer Protection Zone)
    - Extended Zone 1c
    - Extended Zone 2c
    - Zone 3: (Total catchment)



Rev	Date	Description	Drn	Chk	App
01	Nov 2024	DCO Submission	RSK	RSK	EDF

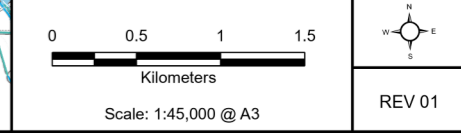
**Springwell Solar Farm**

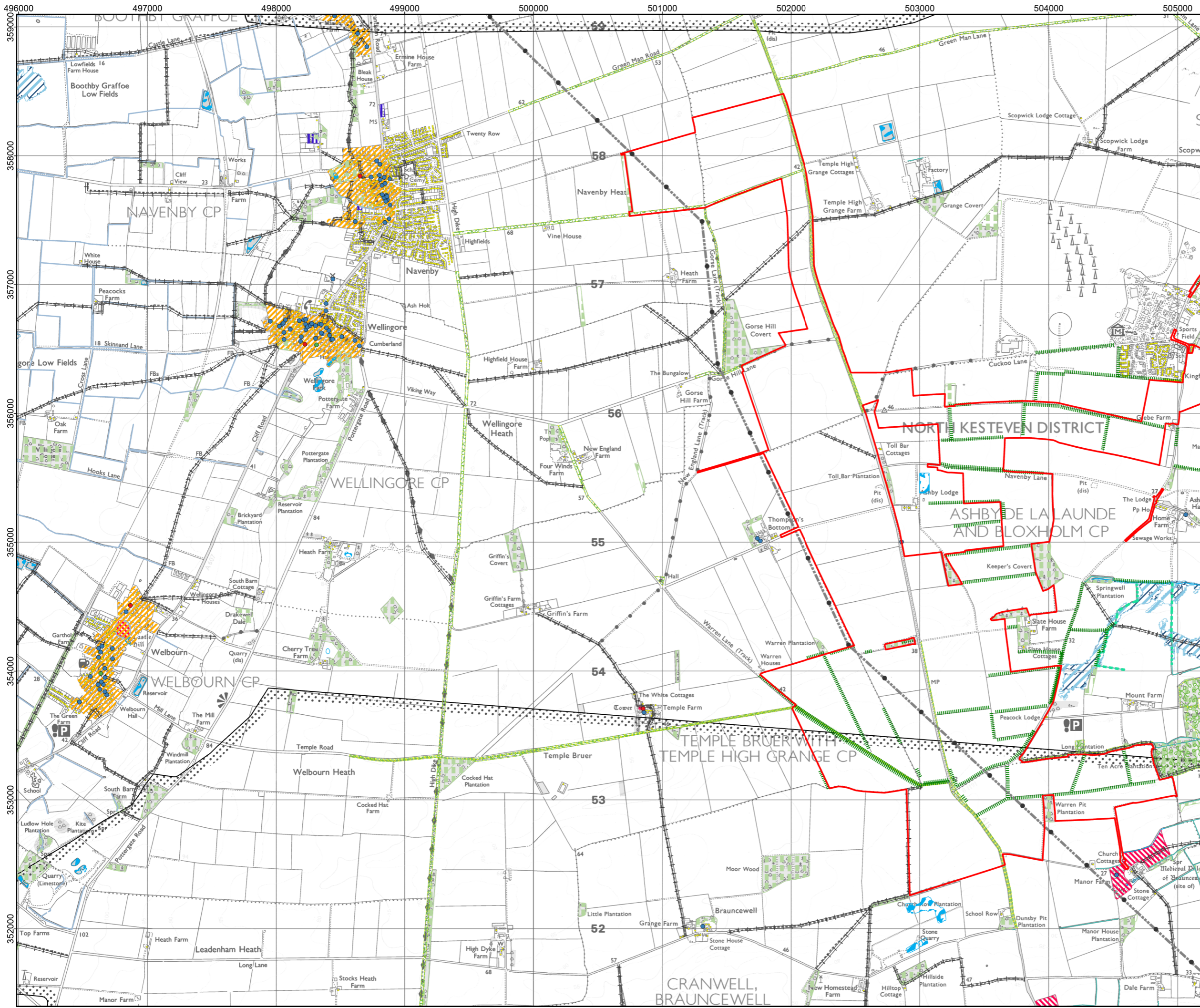
Coordinate System: British National Grid  
 Projection: Transverse Mercator  
 Datum: OSGB 1936  
 Units: Meter

DOCUMENT: ENVIRONMENTAL STATEMENT  
 VOLUME 2: FIGURES  
 REGULATION 5(2)(a)

TITLE:  
 FIGURE 2.1: ENVIRONMENTAL  
 CONSIDERATIONS

PINS REFERENCE NUMBER:  
 EN010149/APP/6.2





- LEGEND:**
- Order Limits
  - Residential Properties
  - Listed Building Grade
    - I
    - II
    - II\*
  - National Grid Towers
  - National Grid Overhead Lines
  - Public Rights of Way
  - Priority Hedgerow
  - Watercourses Suitable for Water Vole
  - Surface Water Line
  - Local Wildlife Sites
  - National Forest Inventory 2021
  - Conservation Areas
  - Scheduled Monuments
  - Historic Landfill Sites
  - Surface Water Area
  - Flood Zone 2
  - Flood Zone 3
  - Source Protection Zones
    - Zone 1: (Inner Protection Zone)
    - Zone 3: (Total catchment)



Rev	Date	Description	Drn	Chk	App
01	Nov 2024	DCO Submission	RSK	RSK	EDF

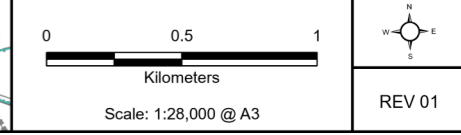
**Springwell Solar Farm**

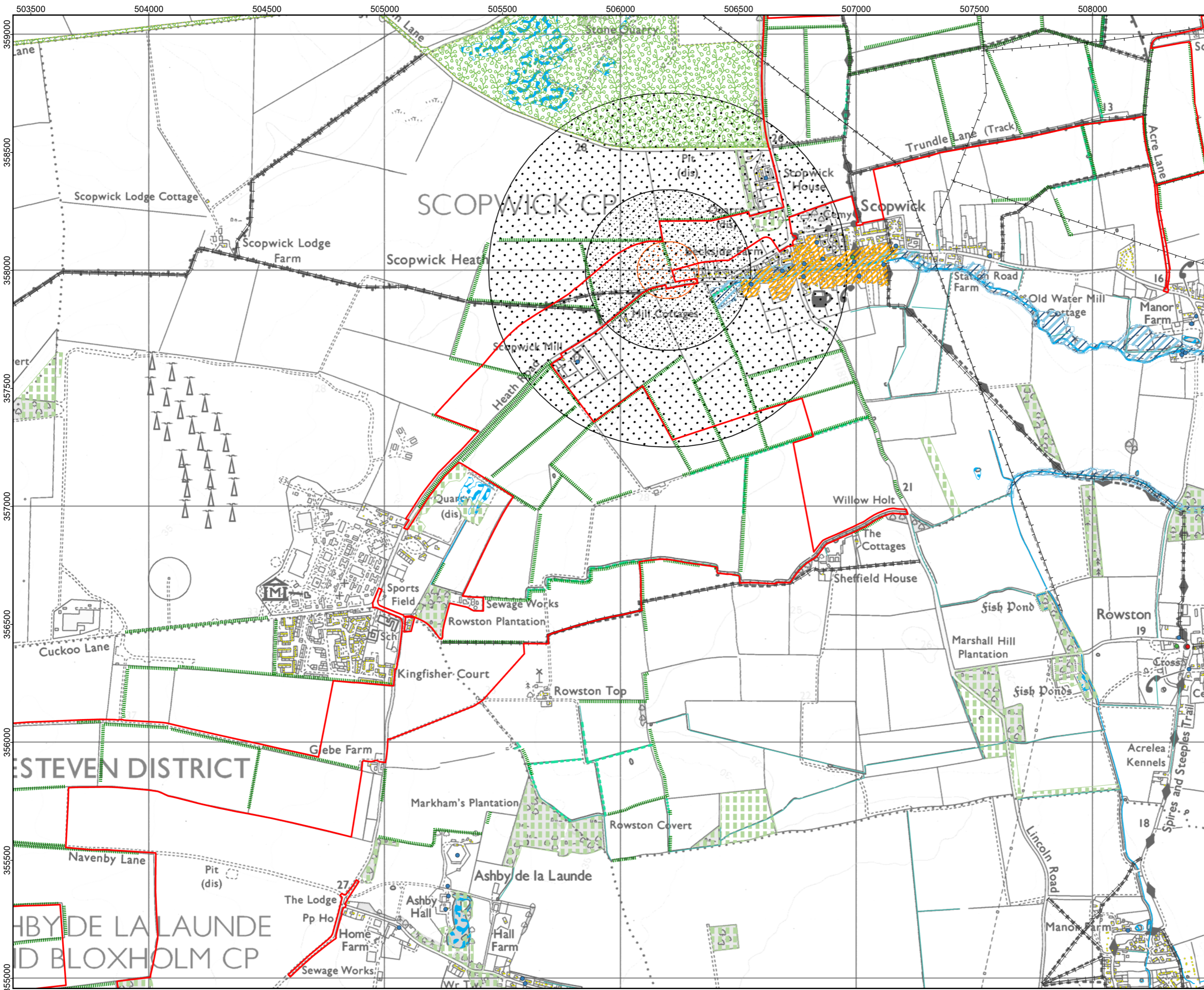
Coordinate System: British National Grid  
 Projection: Transverse Mercator  
 Datum: OSGB 1936  
 Units: Meter

DOCUMENT: ENVIRONMENTAL STATEMENT  
 VOLUME 2: FIGURES  
 REGULATION 5(2)(a)

TITLE:  
 FIGURE 2.1: ENVIRONMENTAL  
 CONSIDERATIONS

PINS REFERENCE NUMBER:  
 EN010149/APP/6.2





**LEGEND:**

- Order Limits
- Residential Properties
- Listed Building Grade
  - I
  - II
  - II\*
- Overhead Lines (132kV)
- = Public Rights of Way
- Priority Hedgerow
- Watercourses Suitable for Water Vole
- Surface Water Line
- Local Wildlife Sites
- National Forest Inventory 2021
- Conservation Areas
- Scheduled Monuments
- Surface Water Area
- Flood Zone 2
- Flood Zone 3
- Source Protection Zones
  - Zone 1: (Inner Protection Zone)
  - Extended Zone 1c
  - Extended Zone 2c



01	Nov 2024	DCO Submission	RSK	RSK	EDF
Rev	Date	Description	Drn	Chk	App

**Springwell Solar Farm**

Coordinate System: British National Grid  
 Projection: Transverse Mercator  
 Datum: OSGB 1936  
 Units: Meter

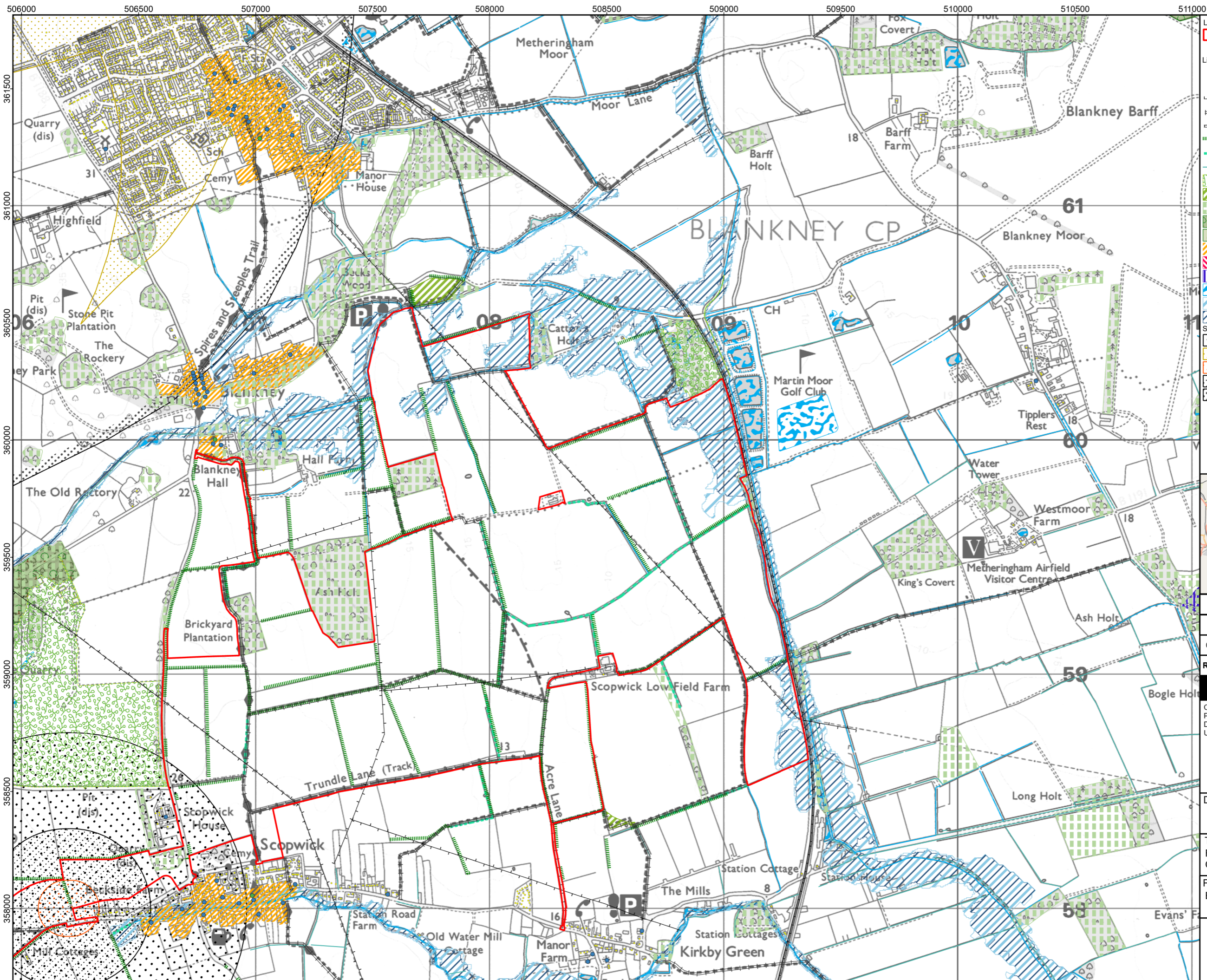
DOCUMENT: ENVIRONMENTAL STATEMENT  
 VOLUME 2: FIGURES  
 REGULATION 5(2)(a)

TITLE:  
 FIGURE 2.1: ENVIRONMENTAL  
 CONSIDERATIONS

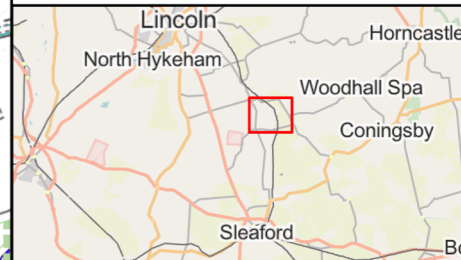
PINS REFERENCE NUMBER:  
 EN010149/APP/6.2

Scale: 1:15,000 @ A3

REV 01



- LEGEND:**
- Order Limits
  - Residential Properties
  - Listed Building Grade
    - II
    - II\*
  - Overhead Lines (132kV)
  - Public Rights of Way
  - Railway
  - Priority Hedgerow
  - Watercourses Suitable for Water Vole
  - Surface Water Line
  - Local Wildlife Sites
  - Grassland Suitable for Reptiles
  - National Forest Inventory 2021
  - Ancient & Semi-Natural Woodland
  - Ancient Replanted Woodland
  - Conservation Areas
  - Scheduled Monuments
  - Historic Landfill Sites
  - Surface Water Area
  - Flood Zone 2
  - Flood Zone 3
  - Source Protection Zones
    - Zone 1: (Inner Protection Zone)
    - Zone 2: (Outer Protection Zone)
    - Extended Zone 1c
    - Extended Zone 2c
    - Zone 3: (Total catchment)



Rev	Date	Description	Drn	Chk	App
01	Nov 2024	DCO Submission	RSK	RSK	EDF

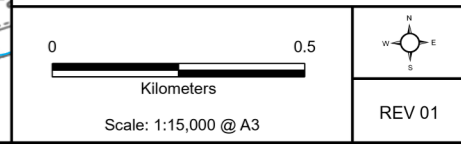
**Springwell Solar Farm**

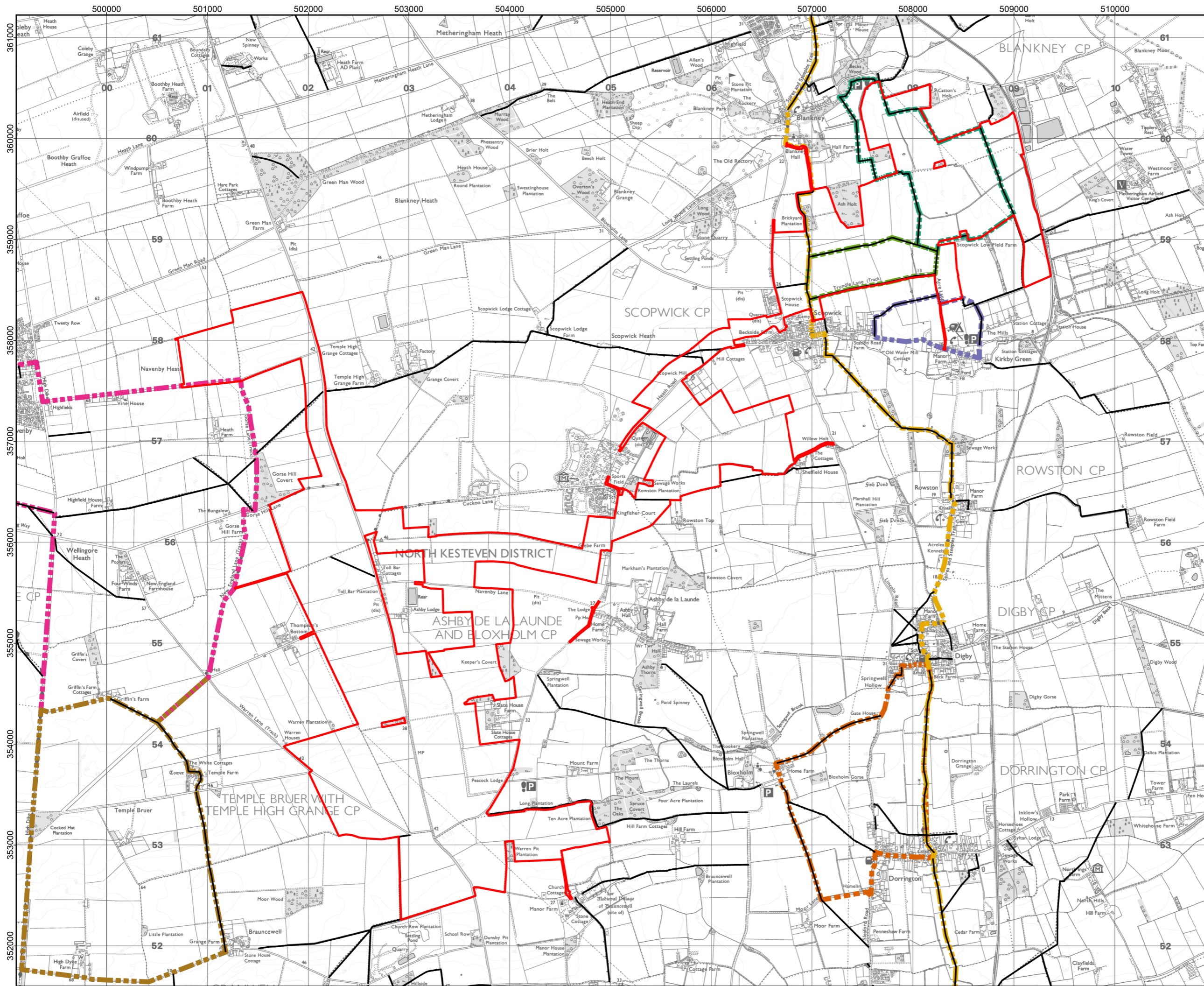
Coordinate System: British National Grid  
 Projection: Transverse Mercator  
 Datum: OSGB 1936  
 Units: Meter

DOCUMENT: ENVIRONMENTAL STATEMENT  
 VOLUME 2: FIGURES  
 REGULATION 5(2)(a)

TITLE:  
 FIGURE 2.1: ENVIRONMENTAL  
 CONSIDERATIONS

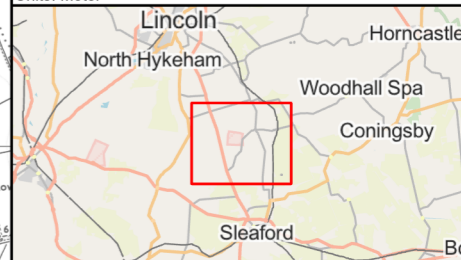
PINS REFERENCE NUMBER:  
 EN010149/APP/6.2





- LEGEND:**
- Order Limits
  - Public Right of Way
  - Promoted Routes**
  - Blankney Circuit
  - Bloxholm Circular
  - Kirkby Green Loop
  - Navenby & the Viking Way
  - Scopwick Loop
  - Spires & Steeples Trail
  - Temple Bruer & the Knights Templar

Coordinate System: British National Grid  
 Projection: Transverse Mercator  
 Datum: OSGB 1936  
 Units: Meter



Rev	Date	Description	Drn	Chk	App
01	Nov 2024	DCO Submission	RSK	RSK	EDF

**Springwell Solar Farm**

DOCUMENT: ENVIRONMENTAL STATEMENT  
 VOLUME 2: FIGURES  
 REGULATION 5(2)(a)

TITLE:  
 FIGURE 2.2: EXISTING PUBLIC  
 RIGHTS OF WAY

PINS REFERENCE NUMBER:  
 EN010149/APP/6.2

